



16th January 2026



# BADDOW NEWS

## Baddow Hall Infant School Newsletter

Dear Families,

This week in our assemblies, we have focused on the impact we can have on others and whether our actions make them feel good. We talked about the things we can do to make others feel happy and how this in turn makes us feel happy. The children are also learning that if we are unkind to others, it does not make us feel good ourselves.



In reception the children are learning to recognise a map of the United Kingdom and locate where we live on the map. The children were also using a map of the UK, to program the Bee Bot to visit different countries on the map. The children had to estimate, as well as, recognise left and right.

In PSHE, children in year 1 have been thinking about why their body needs a good night of sleep. They shared their own routines and talked about how our body needs time to relax before sleeping. They also learnt that it is not a good idea to use screens before bedtime as this stops our body from relaxing. Click [here](#), if you would like to find out more information on supporting your child's sleep routine,

This term in geography lessons in year 2, children will be comparing England to Kenya. They will be learning that Kenya is a country close to the equator and how that impacts the climate and daily life of people living there. This week the children compared their school life to a child in Kenya.

I have had a number of parents speak to me this week about the driving and parking by parents outside school, which is always worse when it is heavy rain. It is important that everyone takes responsibility for their actions, driving and parking responsibly and safely. Taking a few minutes extra to do the school run each day is nothing if you compare it to how you would feel if you caused a child to be hurt. Thank you for helping to keep our school community safe.



Have a good weekend.  
Best wishes,  
Lesley Schlanker  
Headteacher

### Reminder of Upcoming Dates

Please check the school [calendar](#) which is updated regularly. More dates have been added!

## School Attendance

**Our school attendance target is 97%.**

Next week we will be monitoring punctuality, as this has been deteriorating for some children. Children need to be in school by 8.45am. Any child arriving after registers close (9.15am) will be marked as an unauthorised absence for the morning.

## Reporting absence

If your child will be absent from school you must call or email by **9.30am**. When calling or emailing, please include the following information:

- **Child's first and last name**
- **Class number (or name of teacher)**
- **Reason for absence**

Please note that if your child has been sick or has diarrhea, they must remain off school for **48 hours** from the last instance. This is to help prevent the spread of potential bugs.

Please ensure that your child does not bring any products into school containing nuts, including cereal bars, cakes and sandwich fillings.

**This includes chocolate spread as we cannot be sure that it is not Nutella.** We have staff and children with severe nut allergies.

## Order your child's school dinners

Please book your child's meals in advance.

Meals for the **week beginning 26th January 2026 must be booked by midnight on Tuesday 20th January 2026.**

If a meal is not booked, reminders are not sent out so parents will be phoned and asked to provide their child with a packed lunch.

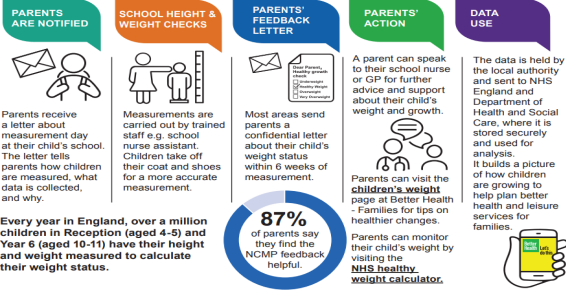


**Reminder—Reception children National Child Measurement Programme**

Reception children will be visited by the nursing team for height and weight checks. A letter was emailed to parents regarding this in December which states that this is an opt-out programme. If you did not opt out then your child will have their height and weight measured.

**School height and weight measurements**

Every year, throughout England, more than a million children in Reception and Year 6 have their height and weight measured at school as part of the National Child Measurement Programme



**Parent Consultations—booking appointments**

Bookings open on Edulink at 6pm on Thursday 22nd January and will close at 8pm on Thursday 29th January. Please book your 10 minute appointment with your child's class teacher. Parent consultations take place on **Tuesday 10th and Thursday 12th February**. If you don't make an appointment, one will be made for you from the remaining available appointment slots.

**School Trips 2025-26—please see dates below**

**Thursday 19th March—Year 2 Music Festival at Christchurch**  
**Friday 24th April—Reception Thorndon Park—Gruffalo Trail**  
**Tuesday 12th May—Year 1 Danbury Park—Pond Dipping & Wildlife**  
**Thursday 14th May—Year 2 Thriftwood Scout Campsite—Outdoor activities**  
**Tuesday 16th June—Year 1 Seaside Day—with History Off The Page**  
**Tuesday 30th June—Year 2 Mini Games—competing with other schools at CSAC**

Letters for all the trips will be sent out in January, Thorndon Park letter has already been emailed to reception parents. Payments will also open on ParentPay when the letters are sent, giving parents plenty of notice of costs involved for each event.

**Other important dates for this half term**

Monday 12th January—Extra-curricular clubs commence  
Thursday 15th January—Deadline to apply for a reception or year 3 place in September 2026.  
Friday 6th February—PSA Disco  
Tuesday 10th & Thursday 12th February—Parent Consultations (bookings open on the Edulink app at 6pm Thursday 22nd January)

**Extra-Curricular Clubs commenced this week**

Some of the clubs still have some spaces left so if you haven't done so already you can contact the club providers to book your child in. If they are attending an active type of club, please ensure that they have appropriate clothes and footwear with them on the day and that earrings are not worn. The timetable and flyers for the club providers can be found under the parents tab on our website.



**Coats and hats/gloves**

Please ensure that with the current cold and wet weather that your child comes to school everyday with a clearly named warm coat. If your child brings with them a hat and gloves too, please ensure that they are clearly named so they are easily identifiable if lost.



*Our vision is for every child to make the best possible progress.*

### **Breakfast Club**

You must prebook and pay for sessions in advance of attending. Breakfast club can be booked online via Parent Pay at any time, but no later than 7.15am on the day. Childcare vouchers can be used as payment for all breakfast club sessions, please see <https://www.childcarechoices.gov.uk/> for additional information on how to apply. Please ensure not to overpay us in vouchers or build up a large credit. Please be reminded that breakfast club sessions are non-refundable.



### **Amazon Wishlist**

We have an Amazon wish list in school. If you would like to contribute something, please click **Here** for our wish list.



### **Easyfundraising**

Money raised can really help our school to buy additional equipment or resources to benefit the children and it doesn't cost you anything.

**To register is simple (and FREE), please click the link [HERE](#)**

### **Keep your postage stamps for us—Stamp Collecting for RNIB**

We are collecting postage stamps on behalf of the Royal Institute for the Blind and have a collection box in the lobby. Please cut around the stamps and place them in the donation box. (Please do not give them to us on envelopes with personal details on).

**RNIB**

See differently

### **Useful information—including local events and holiday clubs information**

Please click **HERE** for the useful information tab on our website for parents such as ordering name labels, advice on health for families and courses for parents.

If you use **Stikins** to order name labels please ensure to use our unique code so that we get a small commission on the orders placed. **Our code is 1081.**

This page is also updated regularly with events taking place in the local area so please ensure to check them out.

### **Textiles Recycling**

We have a textiles recycling box beside the bike shelter. If you are having a sort out of clothes, shoes, bedding, curtains etc, please use this bin to recycle them. This helps to raise funds for the school. A poster of which items can and can't be recycled can be found on the window of our main entrance and also on the side of the recycling box. **(They do not accept school uniform items with logo's on it).** If you have any school logo uniform that you no longer need, please give to the PSA rather than place in the recycle box.

### **Pre-loved uniform**

The PSA regularly hold pre-loved uniform sales. You can also contact the PSA at anytime if you are in need of uniform and they can check what they have. Please contact the PSA directly at **[psa@baddowhall-inf.essex.sch.uk](mailto:psa@baddowhall-inf.essex.sch.uk)** (you can hand pre-loved uniform into the office and we will pass this onto the PSA).

### **Lost Property**

If your child has lost something please check in our lost property boxes which are in the lobby of the main entrance. We please urge parents to name everything, including lunch boxes and water bottles so that they can be easily reunited with your child.

**Any unclaimed items remaining in lost property on the last day of each term will be recycled or disposed of.**