



11th October 2024



BADDOW NEWS

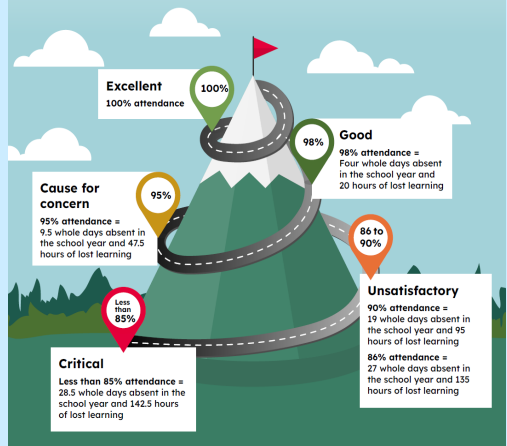
Baddow Hall Infant School Newsletter

Dear Families,

Following the introduction of national statutory guidance, there is a strong focus on attendance in schools across the country.

Our school attendance policy was updated in the summer term to reflect the changes. At the full governing body meeting last night, governors set an ambitious attendance target of **97%** for the school. Have a look at the attendance mountain to get more information on percentage attendance and what that means for your child.

Where does your child sit on the attendance mountain?



This week in reception, children have been using different stories to develop their communication and language skills. The children have been comparing houses from around the world to their own.

In year 1 Art lessons, children have been developing their skills of cutting and joining materials. The children have been learning to weave materials together. This is something children can do at home using natural materials.

Year 2 have been learning about habitats and this week have combined some of their D&T skills with science. They have made their own examples of habitats and written a description of how the animals living there are adapted to that environment. The children were using great scientific vocabulary.

Have a great weekend.
Best Wishes,



Erin



Myla



Florence

Lesley Schlanker
Headteacher

School Attendance

Our school attendance target is **97%**.
This week attendance is **95.9%**

Please book routine medical appointments outside school hours as time off for appointments impacts on your child's attendance.

IMPORTANT REMINDER: Earrings cannot be worn on PE days or if your child attends a club, unless the child can remove them themselves. Staff are not permitted to remove or tape earrings.

Please ensure that your child does not bring any products into school containing nuts, including cereal bars, cakes and sandwich fillings etc.

This also includes chocolate spread as we cannot be sure that it is not Nutella. We have staff and children with severe nut allergies.



Click on the School Money icon above to book your child's dinners.

Deadline to order meals for week commencing 21st October is 9am Wednesday 16th October.

Please ensure to click **PAY** on the app to ensure meals are sent through to us. If your child has a meal ordered and they arrive with a packed lunch, they will be given the meal and the packed lunch will come home with them.

Any changes to your child's meal choices are to be made by parents by **9am Wednesday's** for the following week to ensure that your child is getting their favourite choice, we appreciate that children can change their preferences.

We are unable to accept late orders for meals, if you miss the deadline you will need to provide your child with a packed lunch that week. You are able to order meals up until the October half term, our menu will change after this.



Baddow Hall Schools

BREAKFAST CLUB

open to all Infant and Junior children

Monday – Friday

7.30 – 8.40am

For further details, to check availability and book your child's place, please contact the Infant School office on 01245 471338

Sessions are £6.50 each.

Childcare vouchers accepted.

Pre-booking only, limited places.

(adhoc sessions are available on request, depending on availability. These must be booked/paid for in advance of session).

Breakfast Club Reminder

Booking for next half term opened 12noon Monday 7th October and will close 12noon Monday 14th October.

Please note that we are unable to accommodate your child if we are fully booked.

Please ensure if paying with childcare vouchers that plenty of time is given before each booking window opens so funds can clear in time.

Only pay in what is needed for each half term to prevent building up a large balance.

WISHLIST

Amazon Wishlist

We have an Amazon wish list in school. If you are wanting to contribute something, please click [Here](#) for our wish list. Thank you for the items we have recently received.

Reception and Year 3 Admissions for 2025-26

If your child is due to start year 3 or reception in September 2025, you must apply for their place via the local authority. The admissions round opens on **Monday 4th November 2024 and will close Wednesday 15th January 2025.**

Please note that year 2 children do not automatically get a place at our junior school so please ensure that you apply within the timeframe above, whichever junior school you wish them to attend. Please click [HERE](#) for more information.

School Logo Water Bottles & Lids—limited stock remaining

We sell school logo water bottles (£2.50) and replacement lids (50p) as a shop item on School Money. We only have a limited amount of the bottles and replacement lids and we will not be ordering any more so if you need a bottle or replacement lid please purchase sooner rather than later to avoid disappointment. If you do make any purchases you will need to collect them from the school office.

Parent Consultations

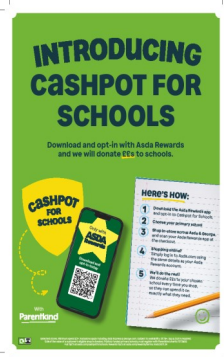
Parent consultations take place on **Tuesday 22nd or Thursday 24th October.** Please note that extra-curricular clubs will still be running on both days.

Deadline to book your 10 minute appointment if you haven't already done so is by **6pm Monday 14th October.**

PSA Events

We hope you are looking forward to the Autumn Fair. Please note that Dance club will still be running on this day as normal.

You can also enter the Pumpkin carving or design competition. It is £1 entry fee which you are able to pay via School Money in advance or cash at the fair.



easyfundraising

Easyfundraising—don't forget to register, it is FREE!

We are excited to announce that we are registered with easyfundraising, a fantastic online platform that enables you to raise free donations with every purchase you make. For this week, every supporter who signs up to support Baddow Hall Infant School through easyfundraising will trigger a £1 bonus donation! To register is simple, please click the link [HERE](#)

Stamps

We are collecting used postage stamps for the Royal National Institute for the Blind (RNIB). If you have any stamps collected, please bring them to the school office.



Lost Property—we have lots in our lost property box.

Please ensure that every item of clothing is named, including coats, water bottles, lunch boxes and book bags so they are easily identifiable to the staff and children. Any items remaining at end of term will be recycled.

Useful information—including holiday club information

Please click [HERE](#) for the useful information tab on our website for parents such as ordering name labels, advice on health for families. It also gives information about events taking place within the local community, which are updated regularly.