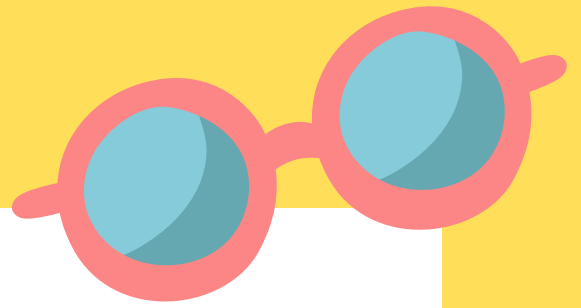


SUMMER



Baddow Hall PSA Newsletter

Thank you for your support throughout the year, we hope you all had fun at the PSA events!

We hope that everybody is looking forward to the summer. We wanted to end the year with a PSA newsletter to look back at the last year and announce the amazing amount that we have all raised as a school community.

The PSA have had a busy year of successful events, and we would like to thank everybody for supporting the PSA and schools by donating, attending and volunteering at these events. Without the help and support of the school community, these events would not be able to go ahead and the children would not be able to experience these additional school activities.

Below is a summary of the PSA activities and events this school year:

September - Reception class welcome packs and The Fun Walk

October - Autumn Disco. We also replaced our very old shed to ensure that we are able to store second hand uniform and other PSA equipment

November - Amigos Magic Show

December - Christmas Fair, jumper sale, Elfridges stall, Infant and Junior Christmas film night

February - Junior film night and special person's day stall

March - Easter fair including the famous 'Baddow Bars'

April - Spring discos

May - Infant film night, Class Tea Towels

June - Summer fair, Frozen Fridays and sports day refreshments

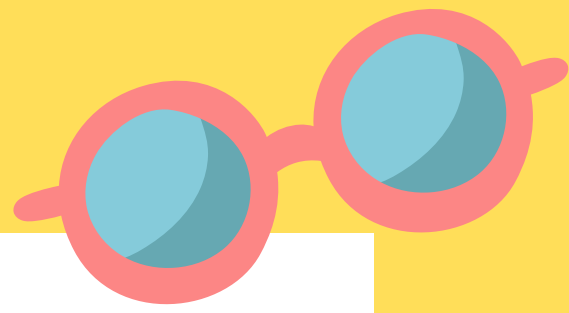
July - Refreshments at end of year performances



IN THE
Summer
TIME



SUMMER



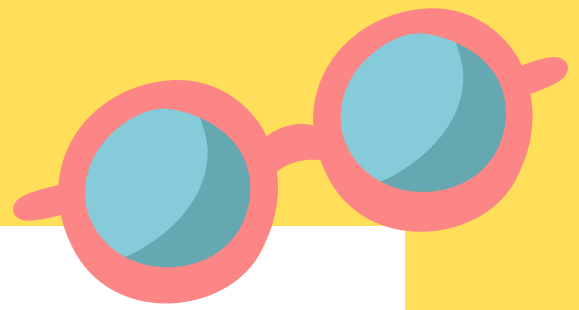
We were thrilled during the year when we won the Tesco's Stronger Starts vote. The Junior School have received £1,500 to uplift their sensory room

A year of events in photos:



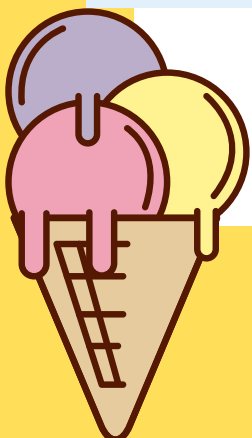
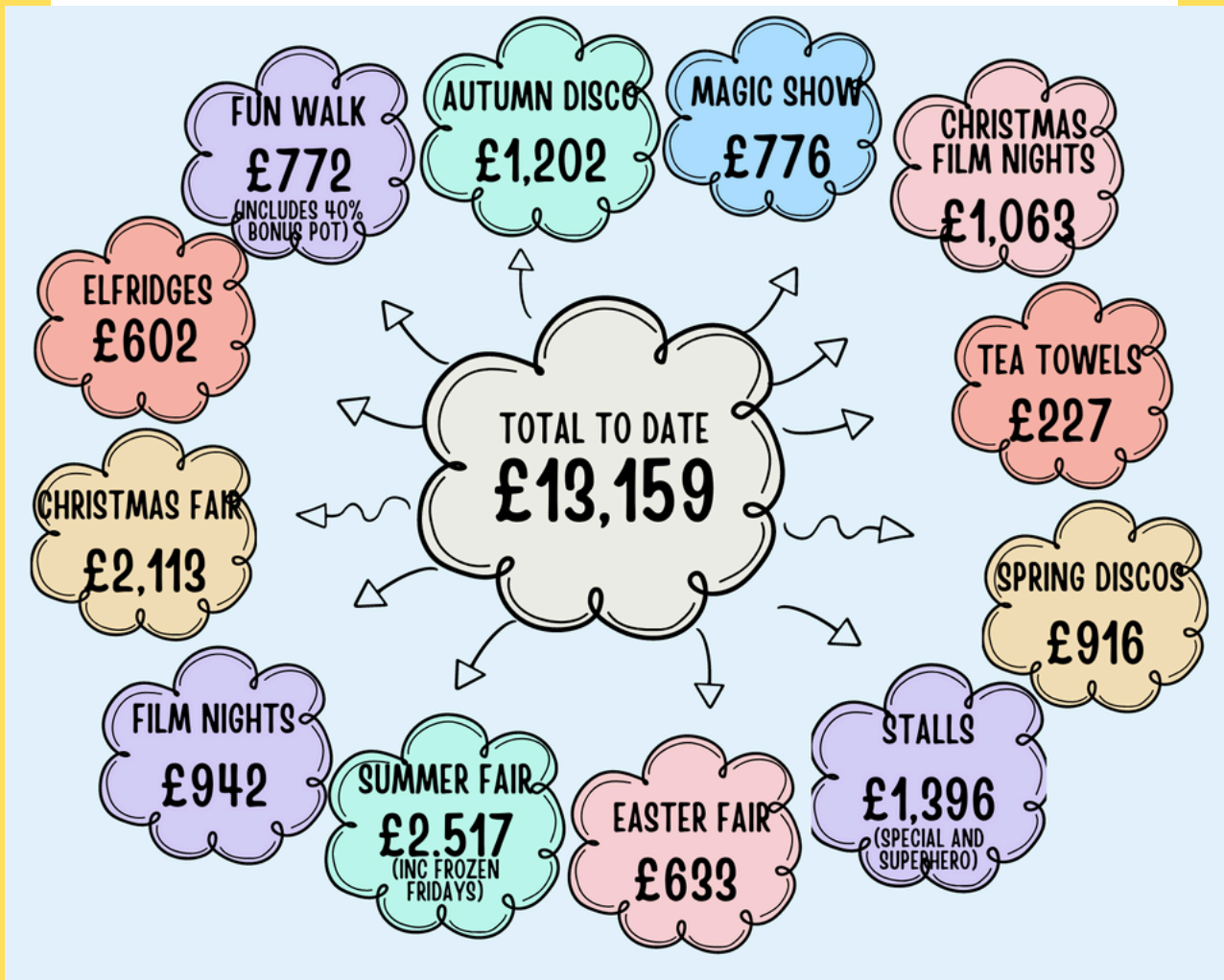
IN THE
Summer
TIME

SUMMER



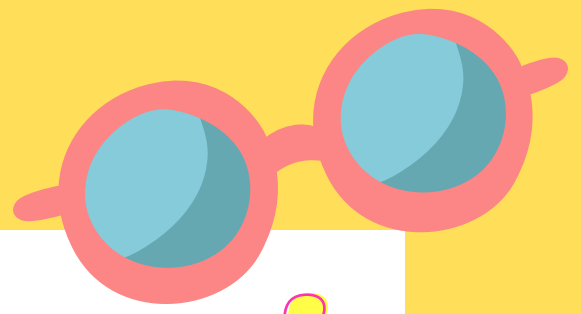
Each PSA event is organised by our amazing members and volunteers. A lot of time and effort is put in these events to ensure that the children have lots of fun and that we can raise funds for the schools. These much needed funds really help to support the schools, and will continue to be used to subsidise school trips, in-school events, amongst many other things.

Below is a summary of the events that we have hosted this school year and how much they raised.



IN THE
Summer
TIME

SUMMER



Thank you!

Many of our lovely local businesses donated to our amazing summer raffle and we would like to thank them all for their generous donations and support.

We would like to particularly thank Bond Residential for sponsoring our Christmas, Easter and Summer Fairs this year!

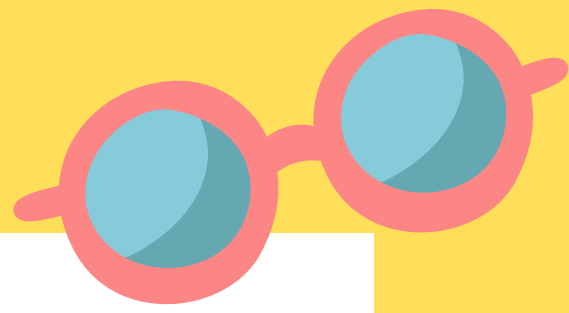
- | | |
|--------------------------------|------------------------------|
| Morrisons | Host Unusual |
| Barleylands | Renais Gin |
| Acacia Beauty | Box2Burn |
| Lakeland | Blossom Bakery |
| Ninja Warrior | Baddow Barbers |
| Wagamama | The Chelmsford Cheesecake Co |
| Top Class Deja Vu | The White Horse Pub |
| TK Maxx | Disney on Ice |
| Picture Perfect | Premier Martial Arts |
| Mace Playce | Oliver Bonas |
| Pirates Bay Adventure Golf | The Lion Inn |
| The Coffee Shop on the Bringey | Hyde Hall |
| Shepherd Motors | Schoolwear Plus |
| Jimmy's Farm | Nandos |
| Playmobil | Entertainer |
| Greenwoods | Chelmsford Brewery |
| Olympia Publishers | Currys |
| Essex Spirits | Tropic |
| Wonderbly | BU By Me |
| Adventure Cinema | Anglia Ruskin University |
| Moulsham Pub | Natural Touch |
| Hobbycraft | Activcamp |
| The Body Coach | Bravissimo |
| Whizz Bang Pop | Summerhill |



IN THE
Summer
TIME



SUMMER



Would you like to join our PSA or get involved in one of our planned events? We are a small friendly group of parents, grandparents and carers that want to make our children's school experience, the best it can be and to raise much need funds for the schools. We would love to hear from you! Please speak to your PSA class rep or email the PSA on:

PSA@Baddowhall-inf.essex.sch.uk

Thank you for supporting Baddow Hall Schools, we're looking forward to seeing you in September!

Have a great summer.

BADDOW HALL PSA



IN THE
Summer
TIME

